

# Cu<sup>2+</sup>-Responsive Bimodal (Optical/MRI) Contrast Agent for Cellular Imaging

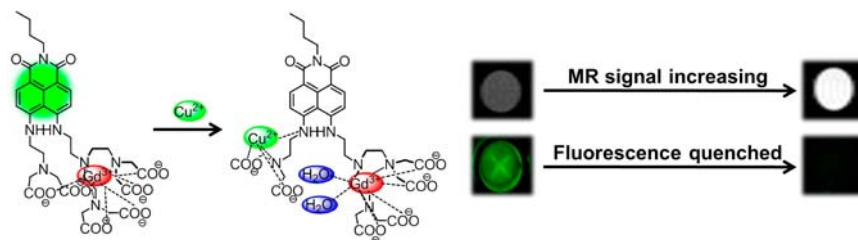
Joo Hee Jang,<sup>†,||</sup> Sankarprasad Bhuniya,<sup>†,||</sup> Jongeun Kang,<sup>‡,§</sup> Areum Yeom,<sup>‡,§</sup>  
Kwan Soo Hong,<sup>\*,‡,§</sup> and Jong Seung Kim<sup>\*,†</sup>

Department of Chemistry, Korea University, Seoul, 136-704, South Korea, Division of MR Research, Korea Basic Science Institute, Cheongwon 363-883, South Korea, and Graduate School of Analytical Science and Technology, Chungnam National University, Daejeon 305-764, South Korea

kshong@kbsi.re.kr; jongskim@korea.ac.kr

Received July 17, 2013

## ABSTRACT



A water-soluble T<sub>1</sub> magnetic resonance imaging contrast agent (1) has been synthesized. The bimodal contrast agent 1 responds to the Cu<sup>2+</sup> ion in living cells by enhancing the MRI modality signal whereas the optical signal gradually drops. This dual modality probe response depends on the cellular free copper ions in RAW 264.7 cells even at the micromolar level.

Copper is a ubiquitous and an indispensable trace element in the human body<sup>1</sup> and is necessary for the proper functioning of various organs and metabolic processes. However, like all essential elements and nutrients, too much or too little nutritional ingestion of Cu<sup>2+</sup> ions can correspondingly result in copper ion excess or deficiency in the body, each of which has its own unique set of adverse health effects.<sup>2</sup> A copper imbalance induces several diseases, including neurodegenerative diseases<sup>3</sup> such as Alzheimer's,<sup>4</sup> Menkes' and Wilson's,<sup>4</sup> amyotrophic lateral sclerosis,<sup>5</sup> and prion diseases.<sup>6</sup>

Several chemical approaches have been established to elucidate the complex phenomenon between copper and normal healthy tissues and/or pathogens.<sup>7</sup> Among these approaches, copper-induced optical imaging has been applied for the past two decades.<sup>8</sup> Recently, the copper-induced magnetic resonance imaging (MRI) signal enhancement has gained much attention because it provides noninvasive three-dimensional images of the tissues.<sup>9</sup> Here, the number of coordinated water molecules first increases with activated contrast agents, which, in turn, increases the relaxivity to give a low relaxivity state ( $q = 0$ ) before activation and a high relaxivity state ( $q = 1$  or 2) after activation. Hence, the overall T<sub>1</sub>-weighted magnetic resonance signal is increased.<sup>10</sup>

<sup>†</sup> Korea University.

<sup>‡</sup> Korea Basic Science Institute.

<sup>§</sup> Chungnam National University.

<sup>||</sup> These authors contributed equally.

(1) Cypher, G. A. *Copper and Human Health and Safety*; New York: International Copper Association Limited, 2001.

(2) Krupanidhi, S.; Sreekumar, A.; Sanjeevi, C. B. *Indian J. Med. Res.* **2008**, *128*, 448.

(3) Gaggelli, E.; Kozlowski, H.; Valensin, D.; Valensin, G. *Chem. Rev.* **2006**, *106*, 1995.

(4) Barnham, K. J.; Masters, C. L.; Bush, A. I. *Nat. Rev. Drug Discovery* **2004**, *3*, 205.

(5) (a) Waggoner, D. J.; Bartnikas, T. B.; Gitlin, J. D. *Neurobiol. Dis.* **1999**, *6*, 221. (b) Valentine, J. S.; Doucette, P. A.; Potter, S. Z. *Annu. Rev. Biochem.* **2005**, *74*, 563.

(6) (a) Bruijn, L. I.; Miller, T. M.; Cleveland, D. W. *Annu. Rev. Neurosci.* **2004**, *27*, 723. (b) Brown, D. R.; Kozlowski, H. *Dalton Trans.* **2004**, *7*, 1907.

(7) Weissleder, R.; Pittet, M. J. *Nature* **2008**, *452*, 580.

(8) (a) Wu, P.-J.; Chen, J.-L.; Chen, C.-P.; Chan, Y.-H. *Chem. Commun.* **2012**, *49*, 898. (b) Ko, K. C.; Wu, J.-S.; Kim, H. J.; Kwon, P. S.; Kim, J. W.; Bartsch, R. A.; Lee, J. Y.; Kim, J. S. *Chem. Commun.* **2011**, *47*, 3165. (c) Wang, M. Q.; Li, K.; Hou, J. T.; Wu, M. Y.; Huang, Z.; Yu, X. Q. *J. Org. Chem.* **2012**, *77*, 8350. (d) Jung, J. Y.; Kang, M.; Chun, J.; Lee, J.; Kim, J.; Kim, Y.; Kim, S.-J.; Lee, C.; Yoon, J. *Chem. Commun.* **2013**, *49*, 176.

(9) Lauffer, R. B. *Chem. Rev.* **1987**, *87*, 901.

(10) (a) Major, J. L.; Parigi, G.; Luchinat, C.; Meade, T. J. *Proc. Natl. Acad. Sci. U.S.A.* **2007**, *104*, 13881. (b) Major, J. L.; Boiteau, R. M.; Meade, T. J. *Inorg. Chem.* **2008**, *47*, 10788. (c) Dong, D.; Jing, X.; Zhang, X.; Hu, X.; Wu, Y.; Duan, C. *Tetrahedron* **2012**, *68*, 306.

MRI or optical imaging modality has its own strengths and weaknesses. Thus, different and complementary systems are combined to overcome inherent limitations associated with any individual technique. In particular, the dual modality of optical/MRI imaging may find preclinical and clinical applications. In the intraoperative procedure, diseased tissues can be localized by MRI, which is then biopsied for histologic validation by an optical method. Duan et al.<sup>11</sup> reported a copper-induced bimodal contrast agent. However, none of the cases with contrast agent toxicity *in vitro* has been evaluated so far.

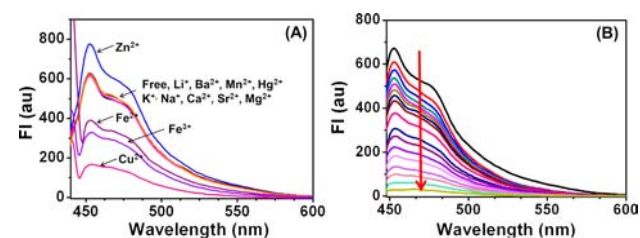
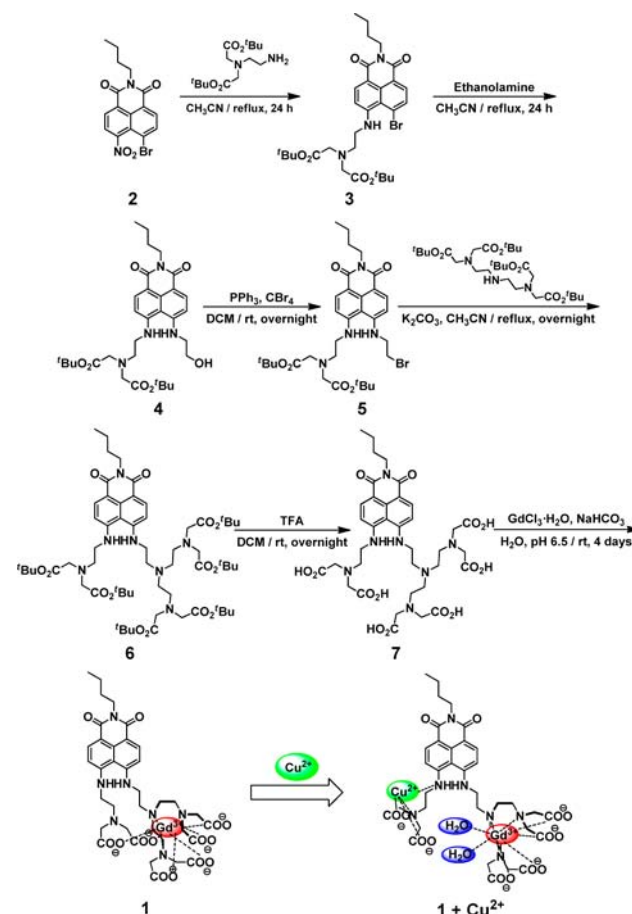
In this study, we report the synthesis and optical/MR properties of the bimodal contrast agent (**1**). Probe **1** showed selective optical changes in the copper ions ( $\text{Cu}^{2+}$ ) level in physiological relevant milieus over other competitive cations. Additionally,  $T_1$ -weighted MR signal enhancement at 3 T, together with turning-off of the optical signal, depending on cellular copper ion level, suggested that the probe **1** could be a suitable candidate for the  $\text{Cu}^{2+}$  ion-induced bimodal imaging of cells.

Compound **2** was synthesized by the literature procedures.<sup>12</sup> As indicated in Scheme 1, **2** was reacted with *tert*-butyl 2,2'-(2-aminoethylazanediyl)diacetate (**10**) to give **3** in 18% yield. Compound **3** with ethanolamine was refluxed in acetonitrile to obtain **4**, whose bromination with  $\text{PPh}_3$  and  $\text{CBr}_4$  at room temperature gave **5** in 90% yield. Then, *tert*-butyl 2,2',2'',2'''-(2,2'-azanediyl)bis(ethane-2,1-diyl)bis(azanetriyl)tetraacetate (**14**) was attached to **5**. The deprotection of the *tert*-butyl group by trifluoroacetic acid (TFA) in dichloromethane afforded **7**. The ligand **7** was complexed with  $\text{GdCl}_3$  in deionized water at pH 6.5 to give the  $\text{Gd}^{3+}$  complex **1**. The detailed synthetic procedure and the corresponding spectroscopic data are available in the Supporting Information (SI).

To prove the chelating ability of compound **1** toward various metals ions, we investigated the fluorescence changes of **1** in the presence of various metal ions, including  $\text{Cu}^{2+}$  ions (Figure 1A). We observed that the fluorescence of probe **1** was selectively quenched by  $\text{Cu}^{2+}$  ions, because of the paramagnetic nature of the  $\text{Cu}^{2+}$  ions. No fluorescence changes were observed upon the addition of metal ions, except for  $\text{Zn}^{2+}$  ions. When the  $\text{Zn}^{2+}$  ions were added to the solution of **1**, the fluorescence intensity was moderately enhanced due to the Chelation Enhanced Fluorescence (CHEF) effect.<sup>13</sup> From the  $\text{Cu}^{2+}$  ion titration experiment, the binding constant of **1** for  $\text{Cu}^{2+}$  ions was calculated to be  $9.30 \times 10^4 \text{ M}^{-1}$  based on 1:1 stoichiometry in the HEPES buffer solution (Figure 1B).

Then, we investigated the selectivity of  $\text{Cu}^{2+}$  ions toward **1** in the presence of other interfering cations such as  $\text{Li}^+$ ,

**Scheme 1.** Synthesis Scheme of Probe **1** and **1**– $\text{Cu}^{2+}$  Complex



**Figure 1.** Fluorescence spectra of probe **1** ( $5 \mu\text{M}$ ,  $\lambda_{\text{ex}} = 440 \text{ nm}$ ) in the presence of various metal ions ( $\text{Li}^+$ ,  $\text{Zn}^{2+}$ ,  $\text{Ba}^{2+}$ ,  $\text{Mn}^{2+}$ ,  $\text{Hg}^{2+}$ ,  $\text{K}^+$ ,  $\text{Na}^+$ ,  $\text{Ca}^{2+}$ ,  $\text{Sr}^{2+}$ ,  $\text{Mg}^{2+}$ ,  $\text{Fe}^{2+}$ ,  $\text{Fe}^{3+}$ , and  $\text{Cu}^{2+}$ ) (A), and different concentrations of  $\text{Cu}^{2+}$  ions ( $0$ – $2500 \mu\text{M}$ ) (B) in HEPES buffer ( $10 \text{ mM}$ ,  $\text{pH } 7.4$ ).

$\text{Zn}^{2+}$ ,  $\text{Ba}^{2+}$ ,  $\text{Mn}^{2+}$ ,  $\text{Hg}^{2+}$ ,  $\text{K}^+$ ,  $\text{Na}^+$ ,  $\text{Ca}^{2+}$ ,  $\text{Sr}^{2+}$ , and  $\text{Mg}^{2+}$  in the aqueous milieu. We also observed that the fluorescence change is unaltered with other metal ions, including  $\text{Zn}^{2+}$  ions (see Figure S3 in SI). It indicates that compound **1** is highly selective toward  $\text{Cu}^{2+}$  ions, which is in good

(11) Zhang, X.; Jing, X.; Liu, T.; Han, G.; Li, H.; Duan, C. *Inorg. Chem.* **2012**, *51*, 2325.

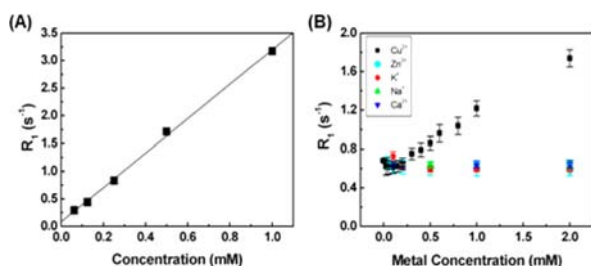
(12) Lu, C.; Xu, Z.; Cui, J.; Zhang, R.; Qian, X. *J. Org. Chem.* **2007**, *72*, 3554.

(13) (a) Lu, X.; Zhu, W.; Xie, Y.; Li, X.; Gao, Y.; Li, F.; Tian, H. *Chem.—Eur. J.* **2010**, *16*, 8355. (b) Tian, Y.; Su, F.; Weber, W.; Nandakumar, V.; Shumway, B. R.; Jin, Y.; Zhou, X.; Holl, M. R.; Johnson, R. H.; Meldrum, D. R. *Biomaterials* **2010**, *31*, 7411. (c) Lee, H.; Lee, H.-S.; Reibenspies, J. H.; Hancock, R. D. *Inorg. Chem.* **2012**, *51*, 10904.

(14) (a) Motreff, A.; da Costa, R. C.; Allouchi, H.; Duttine, M.; Mathonière, C.; Duboc, C.; Vincent, J.-M. *J. Fluorine Chem.* **2012**, *134*, 49. (b) Reger, D. L.; Debreczeni, A.; Smith, M. D. *Inorg. Chem.* **2012**, *51*, 1068.

agreement with the previous study that the carboxylate group strongly binds with  $\text{Cu}^{2+}$  ions rather than other cations.<sup>14</sup>

The ability of  $\text{Cu}^{2+}$  ions to modulate the longitudinal relaxivity of **1** was determined by  $T_1$  measurements at a proton frequency of 60 MHz (pH 7.4, HEPES buffer, at 37 °C). We observed the  $T_1$  relaxivity of probe **1** without  $\text{Cu}^{2+}$  ions is  $2.01 \text{ mM}^{-1} \text{ s}^{-1}$ , which is gradually modulated with  $\text{Cu}^{2+}$  ions and reaches  $4.01 \text{ mM}^{-1} \text{ s}^{-1}$  in the presence of 2 equiv of  $\text{Cu}^{2+}$  ions. This increment (more than 2-fold) is considerably high compared to the previously reported contrast agent for  $\text{Cu}^{2+}$  ions.<sup>11</sup> In contrast, the relaxivity of **1** with  $\text{Zn}^{2+}$  ions marginally decreases (Figure 2). To rationalize the selectivity of **1** toward  $\text{Cu}^{2+}$  ions over biologically relevant metal ions, we measured the proton relaxation rate ( $R_1$ ) of water coordinated to the  $\text{Gd}^{3+}$  ions. The relaxation rate increased only for  $\text{Cu}^{2+}$  ions according to its concentration. However, in other biologically relevant metal ions such as  $\text{Na}^+$ ,  $\text{K}^+$ ,  $\text{Ca}^{2+}$ , and  $\text{Zn}^{2+}$  ions, the relaxation rate remains unaltered with their variable concentration. These data confirm that the MR signal of **1** is selectively enhanced by  $\text{Cu}^{2+}$  ions.



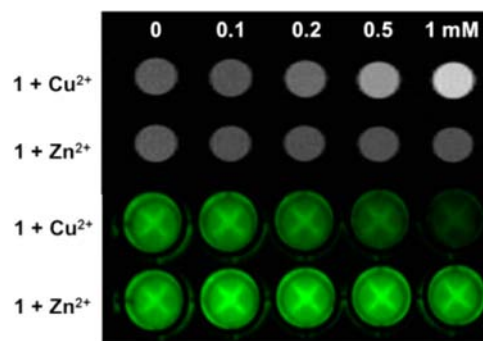
**Figure 2.**  $^1\text{H}$  relaxation rate ( $R_1$ ). (A) Various concentrations of probe **1** (0–1 mM), (B) change in  $^1\text{H}$  relaxation rate ( $R_1$ ) of probe **1** (0.2 mM) in the presence various metal ions ( $\text{Cu}^{2+}$ ,  $\text{Zn}^{2+}$ ,  $\text{K}^+$ ,  $\text{Na}^+$ , and  $\text{Ca}^{2+}$ ) (0–2 mM), at 25 °C and 60 MHz (1.4 T).

To directly visualize the enhanced relaxivity of **1** and the potential for increasing resolution, an MR phantom was imaged (Figure 3) using a 4.7 T MRI system (Bruker) with increasing concentrations of  $\text{Cu}^{2+}$  ions at a fixed concentration of probe **1**. The phantom images become gradually brighter by increasing the concentration  $\text{Cu}^{2+}$  ions, but remain unchanged in the case of  $\text{Zn}^{2+}$  ions. In general, the  $\text{Gd}^{3+}$  complex can be transmetallized by the  $\text{Zn}^{2+}$  ions,<sup>15</sup> which is fortuitous in the fact that neither relaxivity nor phantom images revealed the transmetalation by the  $\text{Zn}^{2+}$  ions of probe **1**. Thus, the new probe **1** can be used to estimate the cellular unbound  $\text{Cu}^{2+}$  ions.

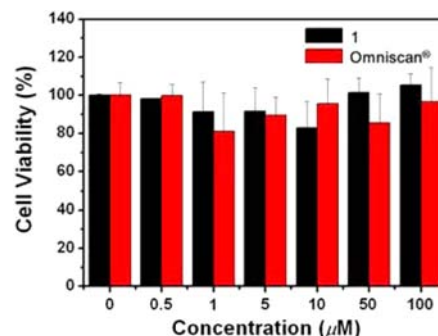
A viability assay determines the ability of cells or tissues to maintain or recover its viability.<sup>16</sup> To demonstrate **1** as a sensitive MRI/FI cellular imaging probe for  $\text{Cu}^{2+}$  ions, we first analyzed the cell biocompatibility of **1** using a murine

(15) Bhuniya, S.; Moon, H.; Lee, H.; Hong, K. S.; Lee, S.; Yu, D. Y.; Kim, J. S. *Biomaterials* **2011**, *32*, 6533.

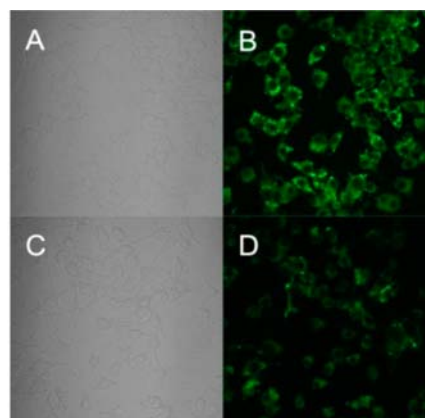
(16) Berridge, M. V.; Herst, R. M.; Tan, A. S. *Biotechnol. Annu. Rev.* **2005**, *11*, 127.



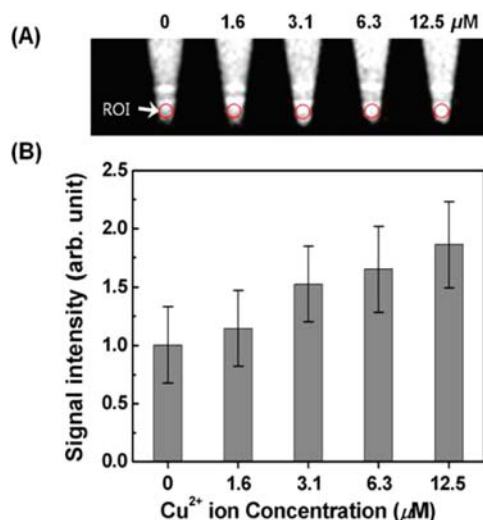
**Figure 3.**  $T_1$ -weighted phantom MR image (up) at 4.7 T, and fluorescence phantom image (down) of **1** (0.2 mM) in the presence of  $\text{Cu}^{2+}$  or  $\text{Zn}^{2+}$  ions with various concentrations (0–1 mM).



**Figure 4.** Comparative cell viability data of probe **1** in RAW 264.7 cell lines with clinically used MRI  $T_1$  contrast agent, Omniscan.



**Figure 5.** (A) Bright-field transmission image and (B) fluorescence image of **1** (12.5 μM). (C) Bright-field transmission image and (D) fluorescence image of probe **1** (12.5 μM) with 1 equiv of  $\text{Cu}^{2+}$  ions in RAW 264.7 cell lines;  $\lambda_{\text{ex}}$  = 400–460 nm,  $\lambda_{\text{em}}$  = 463 nm.



**Figure 6.** (A) Positive contrast in  $T_1$ -weighted MR image of RAW 264.7 cells ( $1 \times 10^7$  each) labeled with probe **1** (12.5  $\mu\text{M}$ ) and  $\text{Cu}^{2+}$  ions. The cells labeled with probe **1** were incubated with variable  $\text{Cu}^{2+}$  ion concentrations in a culture medium for 1 h and washed. A 3 T human MRI scanner was used with  $\text{TE/TR} = 13/200$  ms. (B) Signal intensity in the region of interest increases with  $\text{Cu}^{2+}$  ion concentration.

macrophage cell line (RAW 264.7). In Figure 4, the cell viability of probe **1** treated cell lines is compared with commercially used Omniscan up to a 100  $\mu\text{M}$  concentration of  $\text{Gd}^{3+}$  ions.

Then, we obtained the fluorescence images based on the multiphoton confocal laser scanning microscope system (LSM510-Meta NLO, Karl Zeiss, Germany) with a  $60\times$  objective lens excited with blue light (400–460 nm). As shown by our fluorescence imaging results (Figure 5), labeling of RAW 264.7 cells with a 12.5  $\mu\text{M}$  solution of probe **1** at room temperature for 12 h results in obvious intracellular green fluorescence (Figure 5B). When the cells labeled with probe **1** (12.5  $\mu\text{M}$ ) were incubated with 1 equiv of  $\text{Cu}^{2+}$  ions in a culture medium for 1 h and washed, obvious quenching of the fluorescence intensity was observed. The results firmly implicate that living cells are permeable to **1** and the  $\text{Cu}^{2+}$  ions could be detected in them.

(17) Cox, D. V.; Moore, S. D. P. *J. Bioenerg. Biomembr.* **2002**, *34*, 333.

(18) Scheinberg, H.; Sternlieb, I. *Wilson's disease. Major problems in internal medicine*, Vol. 23; Philadelphia, PA: WB Saunders Company, 1984.

In aqueous solution, probe **1** showed  $\text{Cu}^{2+}$  ion-induced turn-on of MR signal changes and depleted optical changes in cellular milieus. Thus we investigated the ability of **1** to detect changes in the cellular  $\text{Cu}^{2+}$  ion levels using MRI. To validate the possible application of probe **1** in MRI, we recorded  $T_1$ -weighted MR images of RAW 264.7 cells labeled with probe **1** and variable  $\text{Cu}^{2+}$  ion concentrations, using a 3 T human MRI scanner. Figure 6 illustrates that the contrast enhancement gradually increases with  $\text{Cu}^{2+}$  ion concentration even at the micromolar ( $\mu\text{M}$ ) level. In Wilson's disease, the dysfunction of copper transport gene of ATP7B,<sup>17</sup> resulting in the excess chelatable  $\text{Cu}^{2+}$  overload in extrahepatic tissues.<sup>18</sup> Moreover in the cerebral fluid, the copper ion concentration also belongs to the micromolar level;<sup>19</sup> thus this new chelatable probe **1** may deplete the copper storage of certain organs.

In summary, we have synthesized a  $\text{Cu}^{2+}$  triggered bimodal MRI contrast agent (**1**) comprising 1,8-naphthalimide as a fluorescence reporter and a diethylenetriamine tetraacetic acid (DTTA) unit as a chelator for  $\text{Gd}^{3+}$  ions. In the presence of  $\text{Cu}^{2+}$  ions, the fluorescence intensity of **1** decreased because of the paramagnetic nature of  $\text{Cu}^{2+}$  ions. In contrast, with the addition of  $\text{Cu}^{2+}$  ions, first, the total number of water molecules coordinated to **1** increased, and then the  $T_1$ -weighted MR signal increased. The new bimodal contrast agent was nontoxic and able to provide bimodal, i.e., fluorescence and  $T_1$ -weighted MRI, imagings in the cellular medium in the presence of  $\text{Cu}^{2+}$  ions. This new contrast agent can be used to detect free  $\text{Cu}^{2+}$  ions in living cells and inspire researchers to develop new probes to detect free metal ions *in vivo*.

**Acknowledgment.** This work was supported by the CRI (No. 2009-0081566) from NRF, the CAP (PBC066) funded by the Korea Research Council of Fundamental Science and Technology (KRCF), and by the grant from Korea Basic Science Institute (D33400).

**Supporting Information Available.** Text and figures giving details of UV-vis and fluorescence study, NMR, and MASS data of synthesized compounds. This material is available free of charge via the Internet at <http://pubs.acs.org>.

(19) Hartard, C.; Weisner, B.; Dieu, C.; Kunze, K. *J. Neurol.* **1993**, *241*, 101.

The authors declare no competing financial interest.